

## TOYOTA LANCRUISER LC79 & LC76

### 2007 ON DUAL CAB / WAGON

### ROCK SLIDERS

#### **IMPORTANT! – READ BEFORE INSTALLATION**

- This product must be installed exactly as per these instructions using only hardware supplied.
- Take a few moments to read instructions thoroughly before beginning work.
- In the event of damage to any bar component please contact OFFROAD ANIMAL to arrange repair/replacement of components.
- Do not use this product for any vehicle make or model other than that specified on these instructions.
- Do not remove labels from this product.
- This product and its fixings must not be modified in any way unless stated in these fitting instructions.
- The installation of this product is recommended for trained personnel.
- These instructions are correct at time of publication. OFFROAD ANIMAL cannot be held responsible for the impact of any changes subsequently made by the vehicle manufacturer. If you find something has changed please contact us to let us know!
- During installation it is the duty of the installer to check correct operation/clearances of all components.
- If Instructions are to be printed for reference in the workshop, it is recommended that they are printed in colour, for best legibility.
- Fitting time estimated 1-2 hours

## GENERAL CARE AND MAINTENANCE

Only wash the product with a PH neutral car wash to prevent paint damage and discolouration.

Plastic parts may be maintained with silicone spray.

Do not use acidic or alkaline based cleaning products.

It is important to perform regular checks (pre trip or on an annual basis) on the installed product. Checks include:

- Visual inspection for damage (eg. cracks, chips, dents etc.)
- Electrical wiring is not rubbing anything or worn out
- Bolts are torqued to correct specification (see torque guide below)

For touching up small stone chips, Offroad Animal recommends the following paint products:

- Dupli-Color Trim & Bumper Paint Black (TB101)
- VHT Hood, Bumper & Trim Paint Black (SP27)

## BOLT TORQUE SETTINGS

Use the following bolt torques on all fasteners, unless otherwise specified.

Always use a torque wrench to set correct torque settings. Ensure torque wrench is set to Nm unit of measurement. Otherwise perform conversion to lb-ft.

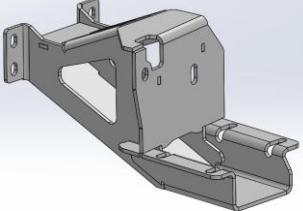
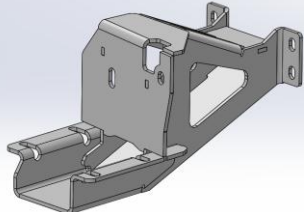
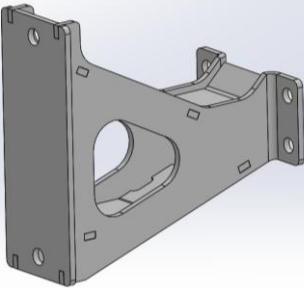

Size	Torque Nm
M5	5 Nm
M6	9 Nm
M8	22 Nm
M10	44 Nm
M12	77 Nm

## PARTS LISTING

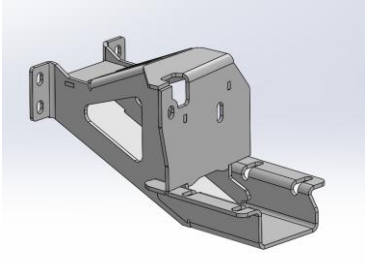
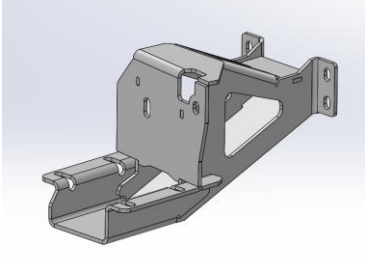
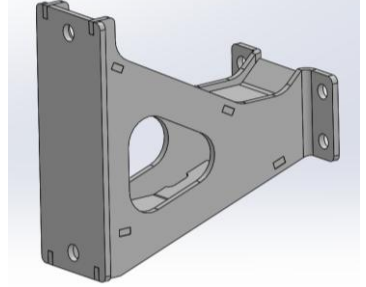
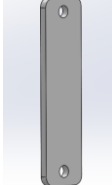
**IMPORTANT:** Check all parts are present before beginning work! Contact OFFROAD ANIMAL if something is missing.

**All fitments require the following parts, found in the Mounting kit.**

### 79 Series Main Parts – Mounting Kit

Qty	Part Number	Description	Image
1	RS-TLC-79-07-ASM2R	LC70 Slider Front Mount Assembly	
1	RS-TLC-79-07-ASM2L	LC70 Slider Front Mount Assembly	
4	RS-TLC-79-07-ASM3	70 Series Slider - Rear Mount Assembly	
4	P-0090	LC70 Rear Mount Backing Plate	

**76 Series Main Parts – Mounting Kit**

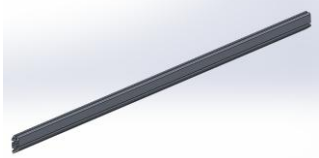
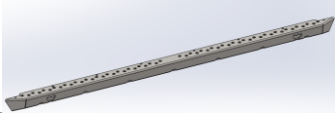
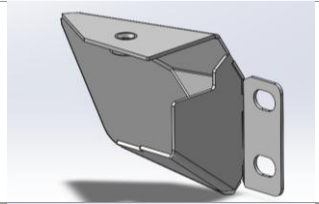
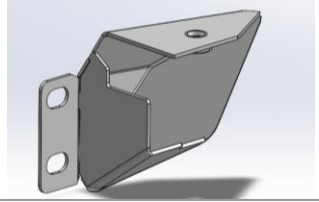
Qty	Part Number	Description	Image
1	RS-TLC-79-07-ASM2R	LC70 Slider Front Mount Assembly	
1	RS-TLC-79-07-ASM2L	LC70 Slider Front Mount Assembly	
2	RS-TLC-79-07-ASM3	70 Series Slider - Rear Mount Assembly	
2	P-0090	LC70 Rear Mount Backing Plate	

**Mounting Kit Small Parts – Contained in Small Parts Kit Bag**

Qty	Part Number	Description
<b>30</b>	M10 x 25	Bolt Hex, M10X25x[1.5], GR8.8 ZP
<b>15</b>	M8 X 20 BHCS BLACK ZINC	SCREW, BUTTON HEAD CAP, M8X20X1.25 BLACK ZP
<b>25</b>	M8 FLAT WASHER- BLACK ZINC	M8 FW- BLACK ZINC
<b>8</b>	M8 X 25 HEX	Bolt Hex, M8X25x1.25, GR8.8 ZP
<b>4</b>	M8 HD FLAT WASHER	M8 FLAT WASHER - High Tensile 19x8x1.9mm
<b>8</b>	M12X90	Bolt Hex, M12X90x1.75, GR8.8 ZP
<b>8</b>	M12 FLANGE NUT	Flange Nut, M12x1.75 G8.8 ZP
<b>8</b>	M12 FLAT WASHER	M12 FW
<b>30</b>	M10 FLANGE NUT	Flange Nut, M10x1.5 G8.8 ZP
<b>22</b>	M8 NUT	Hex Nut, M8x1.25 G8.8 ZP
<b>2</b>	M8 FLANGE NUT	Flange Nut, M8x1.25 G8.8 ZP
<b>4</b>	P-0106	Back Chassis Spacer Plate
<b>4</b>	M8 FLAT WASHER	M8FW
<b>11</b>	M8X20 CAP SCREW	CAP SCREW, M8X20X1.25 GR10.9 ZP
<b>2</b>	NP-COM-M8-210-ASM0	M8 Nut Plate 210mm

Depending on if you are fitting Side rails or not you will require one of the following parts kits.

### 79 Series Rock Slider Kit – (Required if Not Fitting Side Rails)

Qty	Part Number	Description	Image
2	E-0002-1675	Slider extrusion -1675MM	
2	B-0084	slider step	
2	COM-RS-AEC	Slider End Cap Assy - Angled	
2	COM-RS-AECM	Slider End Cap Assy - Angled	

### 79 Rock Slider Kit Small Parts – Contained in Small Parts Kit Bag

Qty	Part Number	Description
8	M10 x 25	Bolt Hex, M10X25x[1.5], GR8.8 ZP
16	M8 X 20 BHCS BLACK ZINC	SCREW, BUTTON HEAD CAP, M8X20X1.25 BLACK ZP
30	M8 FLAT WASHER- BLACK ZINC	M8 FW- BLACK ZINC
8	M10 FLANGE NUT	Flange Nut, M10x1.5 G8.8 ZP
26	M8 NUT	Hex Nut, M8x1.25 G8.8 ZP
14	M8X20 CAP SCREW	CAP SCREW, M8X20X1.25 GR10.9 ZP

**76 Series Rock Slider Kit – (Required if Not Fitting Side Rails)**

Qty	Part Number	Description	Image
2	E-0002-1450	Slider extrusion -1450MM	
2	B-0307	Slider Step - 1450 Extrusion (76 Series)	
2	B-0306L	Slider End Cap - Stub Nose	
2	B-0306R	Slider End Cap - Stub Nose	

**76 Rock Slider Kit Small Parts – Contained in Small Parts Kit Bag**

Qty	Part Number	Description
8	M10X15 BHCS	Bolt Hex, M10X25x[1.5], GR8.8 ZP
8	M10 NUT	Hex Nut, M10x1.5 G8.8 ZP
8	M10 Flat Washer	M10 FW
16	M8 X 20 BHCS BLACK ZINC	SCREW, BUTTON HEAD CAP, M8X20X1.25 BLACK ZP
30	M8 FLAT WASHER- BLACK ZINC	M8 FW- BLACK ZINC
8	M10 FLANGE NUT	Flange Nut, M10x1.5 G8.8 ZP
26	M8 NUT	Hex Nut, M8x1.25 G8.8 ZP
14	M8X20 CAP SCREW	CAP SCREW, M8X20X1.25 GR10.9 ZP
4	M6CN3MM	CAGE NUT M6x2.6-3.5
4	M6x16 BHCS BLACK ZINC	SCREW, BUTTON HEAD CAP, M6X16X1 GR12.9 BLACK ZP

**79 Series – Side Rail Step Kit (Required for Fitment of Side Rails)**

Qty	Part Number	Description	Image
2	E-0002-1675	Slider extrusion -1675MM	
1	B-0243R	STEP - SIDE RAIL 1675 EXTRUSION	
1	B-0243L	STEP - SIDE RAIL 1675 EXTRUSION	
1	COM-RS-EC	Slider End Cap	
1	COM-RS-ECM	Slider End Cap	

**79 Side Rail Step Kit Small Parts – Contained in Small Parts Kit Bag**

Qty	Part Number	Description
30	M10 x 25	Bolt Hex, M10X25x[1.5], GR8.8 ZP
15	M8 X 20 BHCS BLACK ZINC	SCREW, BUTTON HEAD CAP, M8X20X1.25 BLACK ZP
25	M8 FLAT WASHER- BLACK ZINC	M8 FW- BLACK ZINC
8	M8 X 25 HEX	Bolt Hex, M8X25x1.25, GR8.8 ZP
4	M8 HD FLAT WASHER	M8 FLAT WASHER - High Tensile 19x8x1.9mm
8	M12X90	Bolt Hex, M12X90x1.75, GR8.8 ZP
8	M12 FLANGE NUT	Flange Nut, M12x1.75 G8.8 ZP
8	M12 FLAT WASHER	M12 FW
30	M10 FLANGE NUT	Flange Nut, M10x1.5 G8.8 ZP
22	M8 NUT	Hex Nut, M8x1.25 G8.8 ZP
2	M8 FLANGE NUT	Flange Nut, M8x1.25 G8.8 ZP
4	P-0106	Back Chassis Spacer Plate
4	M8 FLAT WASHER	M8FW
11	M8X20 CAP SCREW	CAP SCREW, M8X20X1.25 GR10.9 ZP
2	NP-COM-M8-210-ASMO	M8 Nut Plate 210mm



**76 Series – Side Rail Step Kit (Required for Fitment of Side Rails)**

Qty	Part Number	Description	Image
2	E-0002-1675	Slider extrusion -1450MM	
1	B-0341R	Slider Step 1450 Extrusion (76 Series) – Side Rail Type	
1	B-0341L	Slider Step 1450 Extrusion (76 Series) – Side Rail Type	
1	B-0306L	Slider End Cap - Stub Nose	
1	B-0306R	Slider End Cap - Stub Nose	

**76 Side Rail Step Kit Small Parts – Contained in Small Parts Kit Bag**

Qty	Part Number	Description
24	M8 FLAT WASHER- BLACK ZINC	M8 FW- BLACK ZINC
24	M8 NUT	Hex Nut, M8x1.25 G8.8 ZP
12	M8 X 20 BHCS BLACK ZINC	SCREW, BUTTON HEAD CAP, M8X20X1.25 BLACK ZP
12	M8X20 CAP SCREW	CAP SCREW, M8X20X1.25 GR10.9 ZP
2	M6 FLAT WASHER BLACK ZINC	M6 FW BLACK ZP
2	M6CN3MM	CAGE NUT M6x2.6-3.5
2	M6x16 BHCS BLACK ZINC	SCREW, BUTTON HEAD CAP, M6X16X1 GR12.9 BLACK ZP
8	M10X15 BHCS	SCREW, BUTTON HEAD CAP, M10X16X1.5 GR12.9 ZP
8	M10 NUT	Hex Nut, M10x1.5 G8.8 ZP
8	M10 Flat Washer	M10 FW

## TOOLS REQUIRED

The following tools will be required to install the product.

Hand Tools	Power Tools	Workshop Equipment
Metric Socket Set 8-19mm Socket Extension Bar Metric Spanner Set 10-19mm Torx Drivers T25-T30 Hex (Allen) Key Set 4-6mm Trim Puller Tool Flat Blade Screwdriver set Phillips Head Screwdriver set Utility Knife Side Cutters Pliers	Electric/Air Impact Driver (Optional)	Hydraulic Floor Jack

## WORKSHOP SAFETY

It is the responsibility of the installer to always complete works in a safe manner. Make sure the following safety equipment is available and precautions are observed whilst fitting this product.

<p>Hearing Protection</p> 	<p>Always wear ear protection when using power tools.</p>
<p>Eye Protection</p> 	<p>Ensure eye protection is always worn when cutting or drilling.</p>
<p>Manual Handling</p> 	<p>Do not attempt to lift bar assemblies or rock sliders on your own.</p> <p>Always use two people to lift or use mechanical Lifting aid such as hydraulic lifting trolley.</p>
<p>Vehicle Support</p> 	<p>Always ensure vehicle is properly supported when working on it. Do not attempt to fit products whilst suspension work is being carried out. Do not work under a vehicle supported only by a jack.</p>



**NOTE:** These instructions show LC79 Dual Cab model. LC76 Wagon model uses same procedure, but only requires 1x of the RS-TLC-79-07-ASM3 Mounts per side and uses shorter Steps.

1. Remove the Factory side steps by removing the 12mm head bolts securing it to the body.
2. Discard Factory Steps.

**TOOLS REQUIRED**

12mm Socket

**FASTENERS**



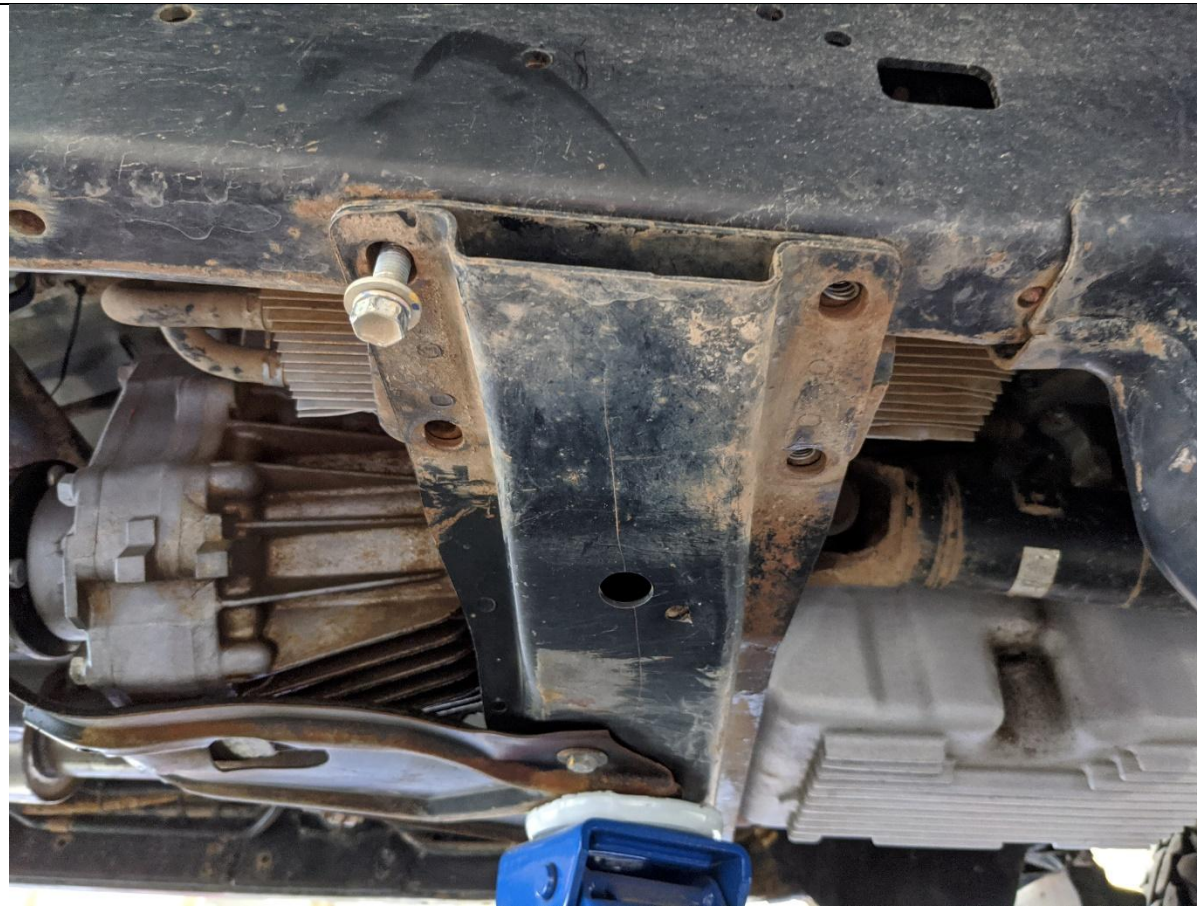
3. Place a Jack under the car to support the transmission cross member.
4. When installing the front mounts, complete the installation of one side before starting the other. Under no circumstances should both sides of the transmission crossmember be loose at the same time.

**TOOLS REQUIRED**

Jack

**FASTENERS**





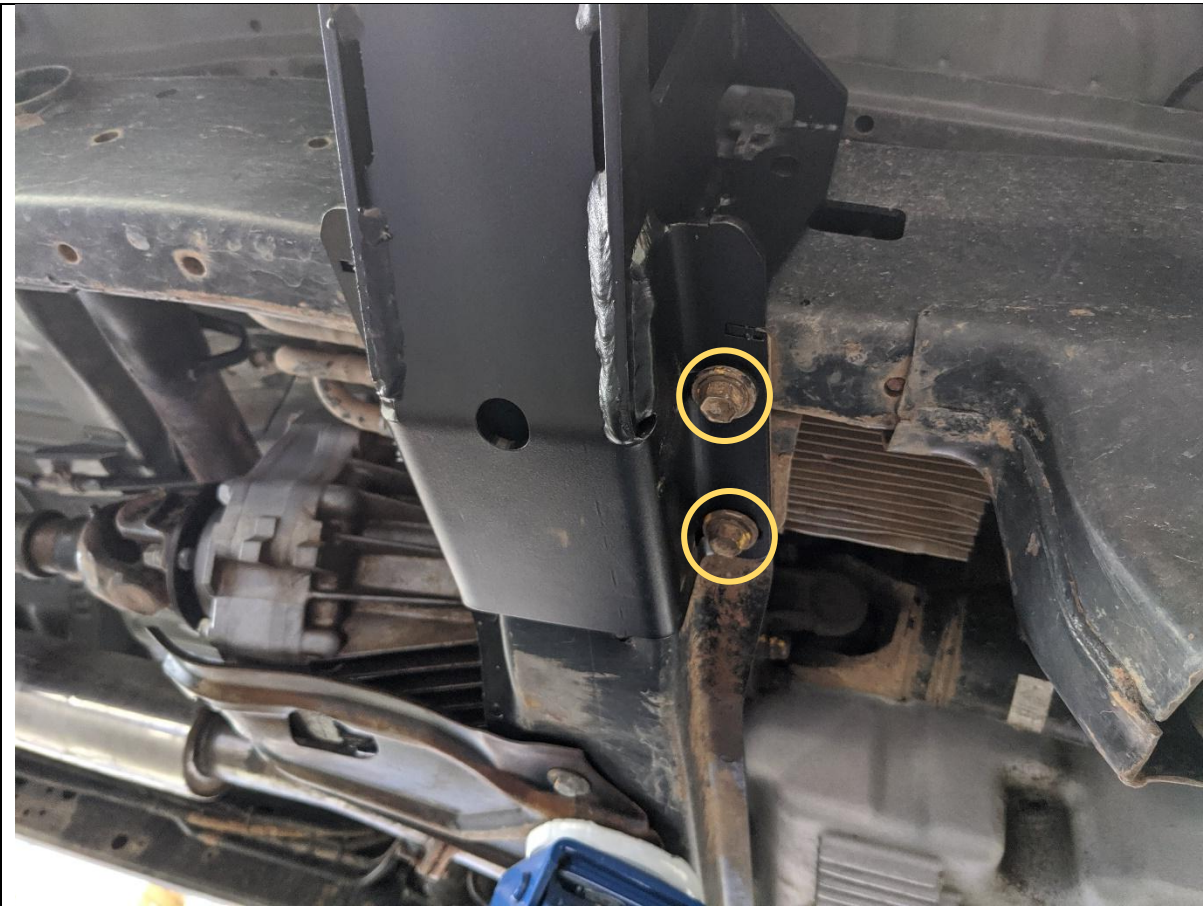
5. Remove the Factory bolts securing the transmission crossmember to the chassis rail.
6. The transmission crossmember should not move, as the weight of the transmission should be supported by the jack. If the crossmember starts to move as you are loosening bolts, re tighten bolts and re-set jack before repeating.

**TOOLS REQUIRED**

Jack  
14mm Socket

**FASTENERS**

4x Factory Fine Pitch Bolts  
Per Side



<div>7. Fit the front mount to the transmission crossmember, re using the original bolts.</div> <div>8. Tighten Bolts, using 14mm socket.</div>	<div>TOOLS REQUIRED</div> <div>14mm socket</div>
	<div>FASTENERS</div>



9. Fit the rear M8 bolt with HD Flat washer to secure the top of the mount to the chassis.
10. Some vehicles have an M8 threaded point in this location. For vehicles that don't, use M8 nut plate, fed from rectangular hole in front of mount.

**TOOLS REQUIRED****FASTENERS**

M8x25 Bolt  
M8 Flat Washer





11. Fit the front M8 bolt to the top of the mount. Hold M8 Flange nut behind hole location in chassis through Rectangular opening in chassis as shown in the image.

12. Tighten both M8 Bolts with 13mm Spanner

**TOOLS REQUIRED**

13mm Spanner

**FASTENERS**

M8x25 Bolt  
M8 HD Flat Washer  
M8 Flange Nut



13. Remove the 2x 12mm head bolts securing the hoses to the rear face of the chassis rail.
14. Fit small spacer plates between the chassis and bracket as shown. Secure with new M8x25mm Bolt supplied. Tighten with 13mm socket

**TOOLS REQUIRED**

12mm socket  
13mm socket

**FASTENERS**

12mm head factory bolt –  
Discard

2x M8x25 Bolt  
2xM8 Flat Washer





15. Prepare mid and rear mounts for fitting by threading through M12x90 Bolt through top hole.

**TOOLS REQUIRED**

10mm Socket

**FASTENERS**

M12x90 Bolt  
Flat Washer

Per mount.

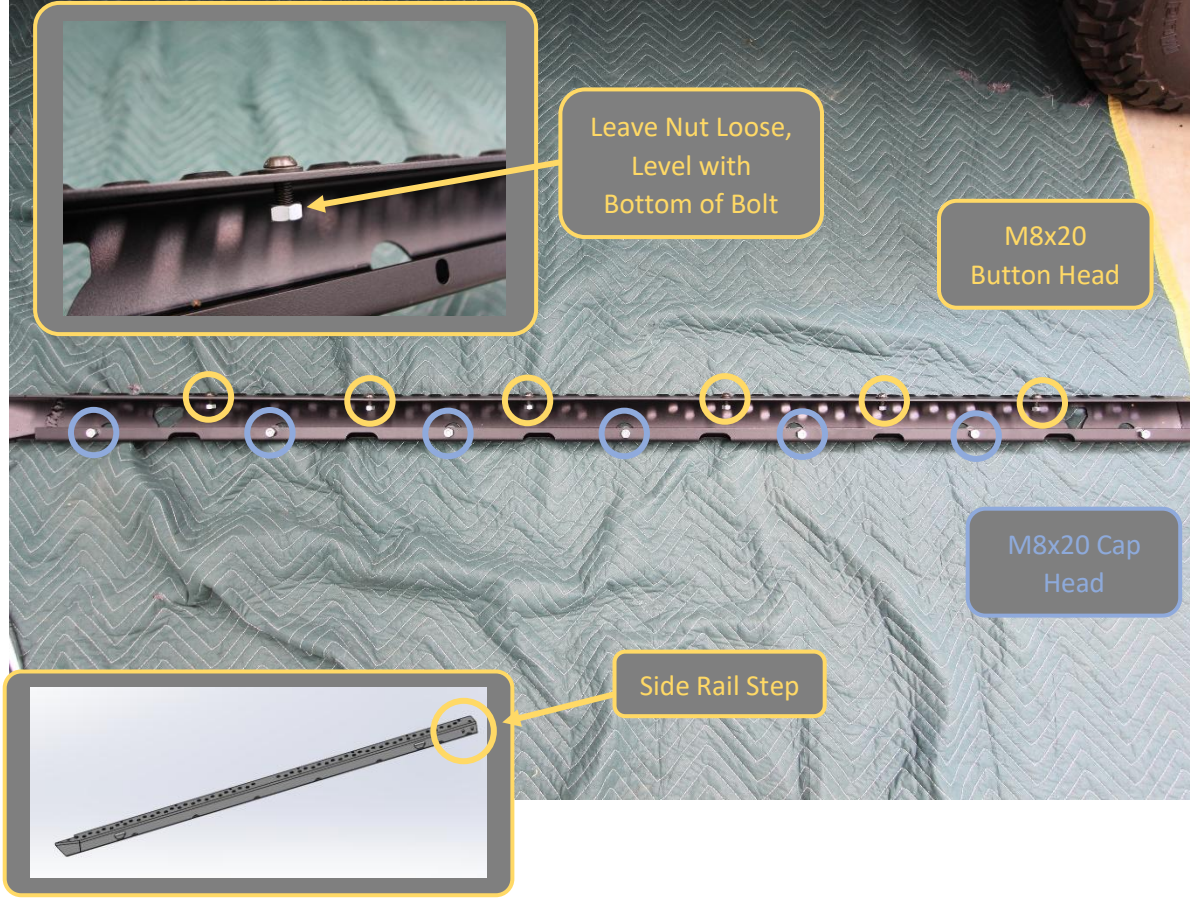


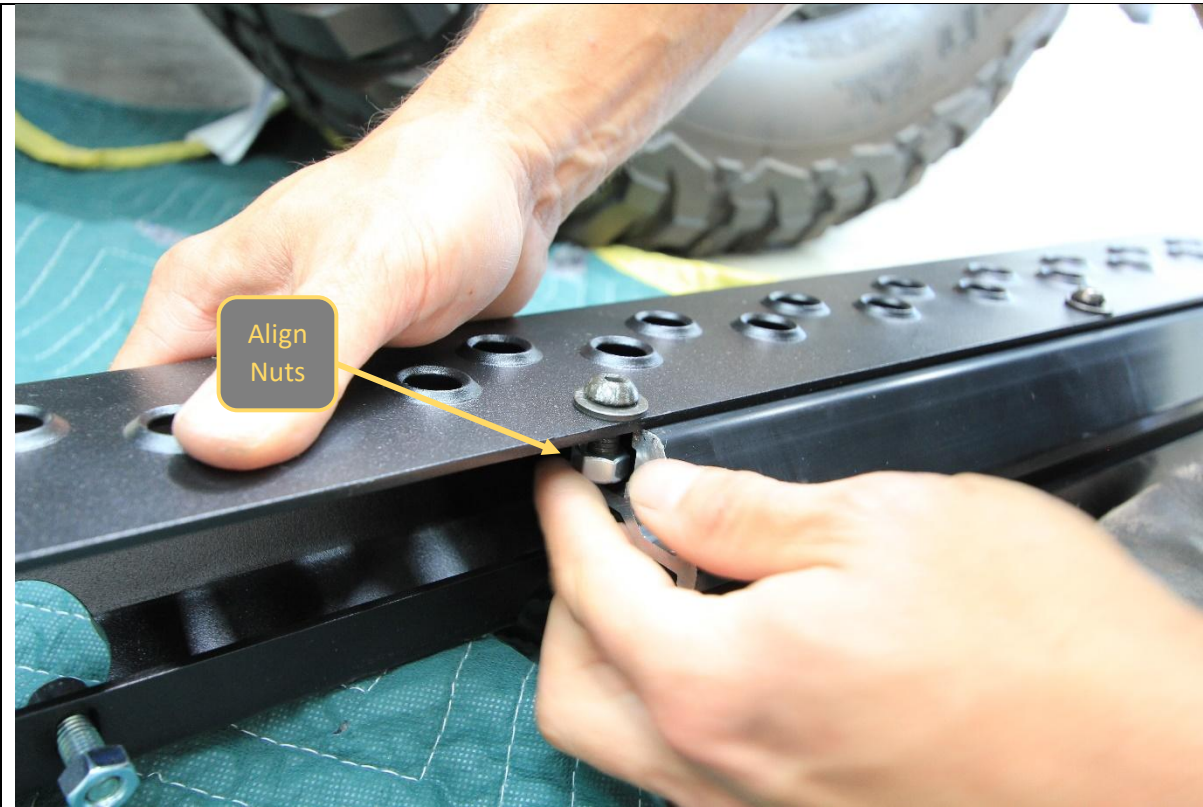
16. Raise Rear mount into position Fit Backing plate, secure with M12 Flange Nut.
17. Once top is secured, fit bottom M12x90 Bolt and Secure with Flange Nut.
18. Leave bolts finger tight at this stage.

**TOOLS REQUIRED****FASTENERS**

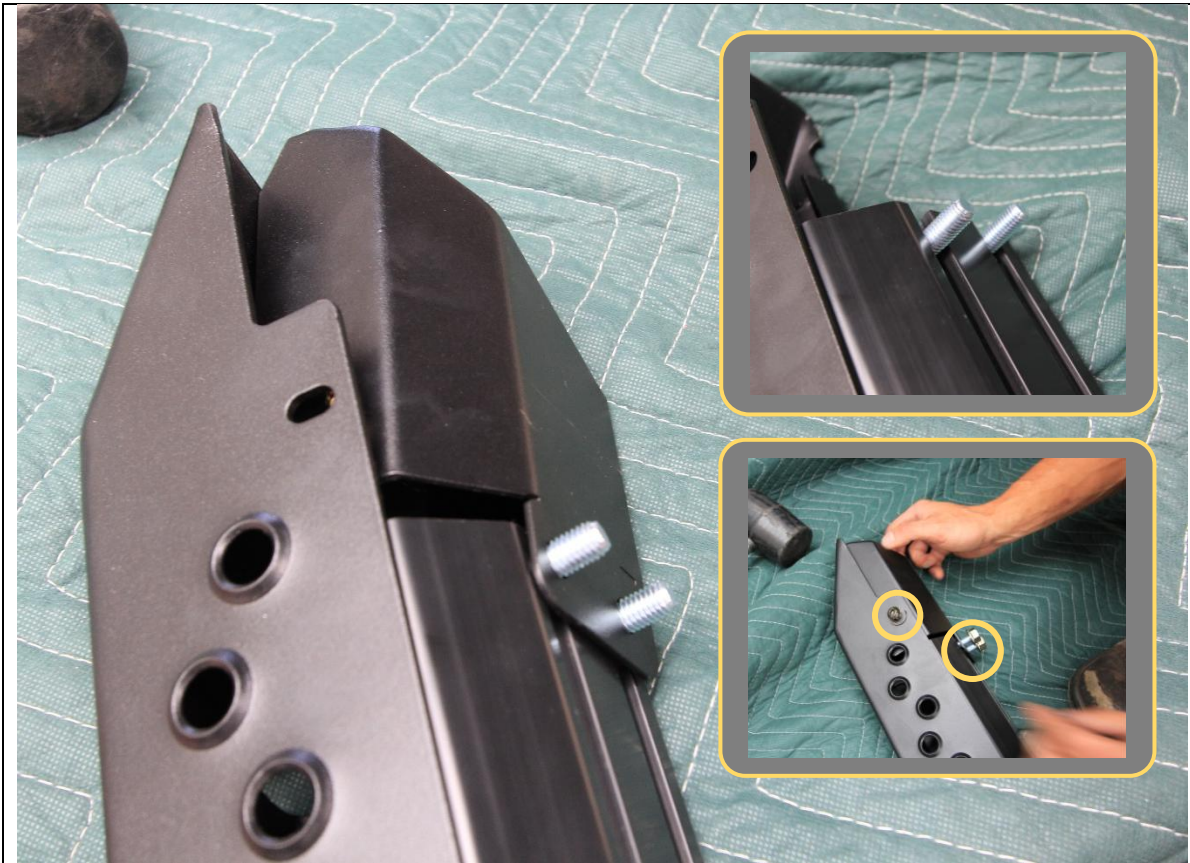
M12x90Bolt  
M12 Flange Nut  
M12 Flat Washer



	
<ol style="list-style-type: none"><li>19. Prepare step plate by loosely pre fitting the fasteners to the step.</li><li>20. Note: Steps are handed for Side rail type steps but technique for fitment to extrusion is the same.</li><li>21. Use M8x20 black button head screws, black M8 washers and M8 Nuts on 6x locations on top of step as shown</li><li>22. Use M8x20 cap head screws M8 washers and M8 nuts on 7x locations on bottom side of step.</li></ol>	<b>TOOLS REQUIRED</b>
	<b>FASTENERS</b>  6x M8x20 Black Button Head 7xM8x20 Cap Head 13x M8 Black Washer 13x M8 Nut



<div>23. Slide the step plate onto the main slider structural extrusion. Align the nuts as they enter the T Slots on the extrusion.</div> <div>24. Center the Step on the extrusion, by measuring distance from extrusion to tip of step, and adjusting until both sides are equal.</div>	TOOLS REQUIRED
	FASTENERS



25. Fit end cap to one end of the extrusion. NOTE: if fitting side rail steps this needs to be the rear.
26. First slide 2x M10x25 Hex bolts into the T slots on back side of extrusion.
27. Fit end cap over these bolts.
28. Secure with M10 flange nuts on T slot bolts and M8x20 bolt in top, through tread plate. End cap should align with end of tread plate if tread plate is centered correctly.

**TOOLS REQUIRED****FASTENERS**


2x M10x25 Bolts  
1x M8x20 Button Head  
bolt  
1xM8 Flat Washer  
2x M10 Flange Nut





<p>29. Slide the 12x M10x25 Hex bolts into the T slots on back side of extrusion. 6 bolts per slot.</p> <p>30. Loosely arrange the bolts in 3x groups of 4, in approximate location of mounts, as shown.</p>	<b>TOOLS REQUIRED</b>
	<b>FASTENERS</b>  12x M10x25 Bolts





<p>31. Fit mirrored end cap to remaining end of slider, using 2x M10x25 hex bolts and M8x20 Button head bolt with flat washer as per previous. – Note: This is not required when fitting side rail steps.</p> <p>32. Check alignment of end caps, End cap should align with edge of tread plate if properly centered. Adjust end cap / tread plate position as required.</p>	<p><b>TOOLS REQUIRED</b></p> <p>5mm Hex key 6mm Hex key 15mm spanner</p>
<p>33. Once happy with alignment tighten all bolts on slider extrusion, using 5/6MM hex key and 15mm spanner.</p>	<p><b>FASTENERS</b></p> <p>2x M10x25 Bolts 1x M8x20 Button Head bolt 1xM8 Flat Washer 2x M10 Flange Nut</p>



<p>34. With Assistance from another person, or mechanical lifting aid such as a lift trolley, Lift the slider onto the mounts.</p> <p>35. Manipulation of position of bolts in T slot to align with mounts will be required to get slider on. Secure with M10 Flange Nuts</p>	<p><b>TOOLS REQUIRED</b></p> <p>5mm Hex key 6mm Hex key 15mm spanner</p>
	<p><b>FASTENERS</b></p> <p>12x M10 Flange Nut</p>





36. Adjust fore / aft position of sliders on mounts to achieve even appearance if required.
37. Aim for a continuation of the guard line into the slider step at the rear as shown.

**TOOLS REQUIRED****FASTENERS**



38. Once satisfied with alignment, which should be parallel to the body, tighten all bolts, starting with chassis mounts.
39. Tighten Mid and Rear mount bolts using 18mm Socket / Spanner. Ensure that mid / rear mounts are tightened evenly, by alternating a few turns on top then bottom bolt when tightening.

**TOOLS REQUIRED**

18mm Socket / Spanner  
5mm Allen Key

**FASTENERS**





40. Tighten all mount to slider M10 flange nuts using 15mm spanner. A ratcheting spanner makes this process easier.

**TOOLS REQUIRED**

15mm Socket / Spanner

**FASTENERS**



<div>41. Repeat the entire process for the other side of the vehicle. Note different mount on back LHS as mentioned in step 8.</div> <div>42. After that you are done!</div> <div>43. If you are going on to install the Side Rail Kit, refer to separate instruction for kit.</div>	<div>TOOLS REQUIRED</div> <div>Refer to Side Rail Instruction</div>
	<div>FASTENERS</div> <div>Refer to Side Rail Instruction</div>





**Congratulations!**  
**Head for the tracks and enjoy your newly protected Cruiser!**